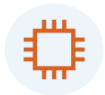


FD702XW-X-R461

1GE+1FE+CATV+WIFI XPON ONU



High Speed CPU



Low Power Consumption



Software Customization



Optional Shell Supply



Brief Views

FD702XW-X-R461 dual-mode ONU supports EPON and GPON two modes access. The ONU automatically switches into the corresponding PON mode by identifying the local OLT mode to complete GPON or EPON adaptive access.

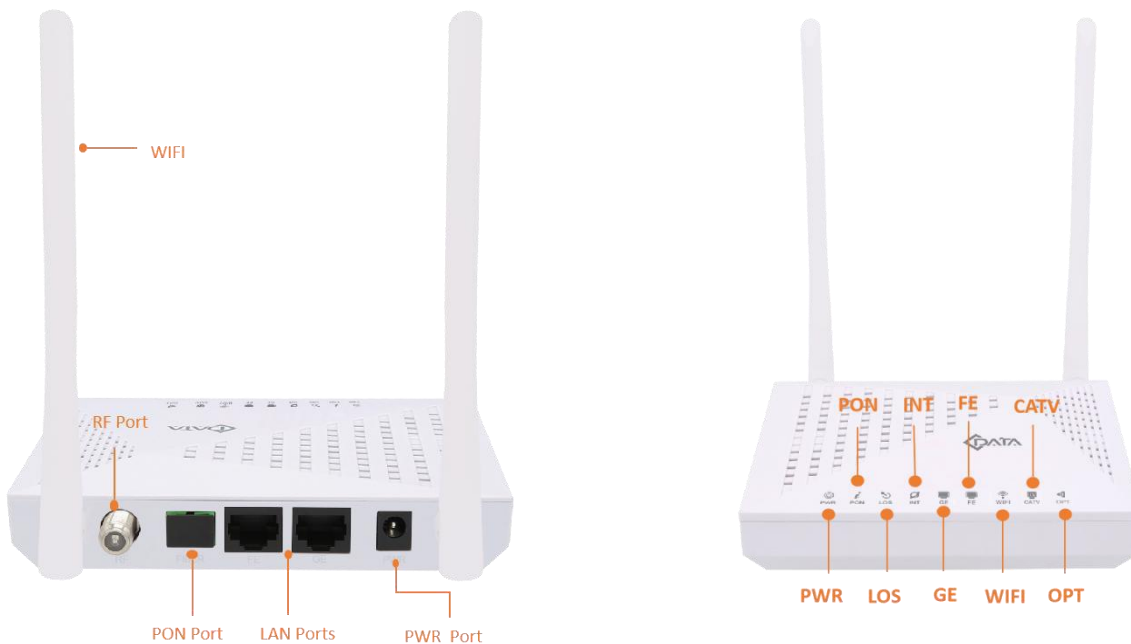
FD702XW-X-R461 integrates wireless function which meets 802.11 b/g/n technical standards. It has two external high gain omnidirectional antennas, the wireless transmission rate up to 300Mbps. It has the characteristics of strong penetrating power and wide coverage. It can provide users with more efficient data transmission security.



Functional Feature

- Single-fiber access, provides internet, CATV, WIFI multiple service
- Support ONU auto-discovery/Link detection/remote upgrade of software
- Meet 802.11 b/g/n WIFI technical standard
- Support VLAN transparent, tag configuration
- Support multicast function
- Support DHCP/Static/PPPOE internet mode
- Support port-binding
- Support OAM/OMCI+TR069 remote management
- Support data encryption and decryption function
- Support Dynamic Bandwidth Allocation (DBA)
- Support MAC filter and URL access control
- Support remote CATV port management
- Support power-off alarm function ,easy for link problem detection
- Specialized design for system breakdown prevention to maintain stable system
- EMS network management based on SNMP ,convenient for maintenance

Product Interface and LED



LED Definitions

Indicator		Description
PWR	Power status	On: The ONT is power on; Off: The ONT is Power off;
PON	ONT Register	On: Success to register to OLT; Blinking: In process of registering to OLT; Off:Failed to register to OLT or no normal optical signal input;
LOS	PON optical signals	On: Optical power lower than receiver sensitivity; Off: Optical in normal;
GE	LAN port status	On: Ethernet connection is normal; Blinking: Data is being transmitted through the Ethernet port; Off: Ethernet connection is not set up;
FE	LAN port status	On: Ethernet connection is normal; Blinking: Data is being transmitted through the Ethernet port; Off: Ethernet connection is not set up;
WIFI	WIFI	Blinking: Data is being transmitted On: WIFI function Opens
CATV	CATV status	On: CATV optical normal Off: The CATV signals are not received
INT	Internet status indicator	On: The routed WAN Internet access service is normal. Off: The routed WAN Internet access service is abnormal.
OPT	Light intensity indicator	On: higher than ONURX maximum threshold; flashing: lower than ONU RX minimum threshold; off: ONU RX is within the normal threshold range.

Hardware

- **GPON/EPON Port**
 - Single mode single fiber
 - GPON: FSAN G.984.2 standard, Class B+
 - EPON: 1000BASE-PX20+ symmetric
 - GPON: 2.488Gbps/1.244Gbps downstream/upstream
 - EPON: 1.25Gbps downstream/upstream
 - Wavelength :
Transmit: 1310nm Receiver: 1490nm
 - Receiving sensitivity :
GPON: -28dBm EPON: -27dBm
 - Saturated power :
GPON: -8dBm EPON: -3dBm
 - Transmitting power :
GPON: 0.5~5dBm EPON:0~4dBm
- **User Port(LAN)**
 - RJ-45 connector
 - 1*10/100 and 1*10/100/1000Mbps adaptive Ethernet port
 - Full/half duplex
 - Auto MDI/MDI-X
- **WIFI performance parameters**
 - IEEE802.11b/g/n(2.4G)
 - Max rate: 300M(2.4G)
 - MAX TX power 2.4G:17dBm

● **CATV (Input /Output port)**

- Wavelength: 1550nm
- Input optical power: -15dBm~+2dBm(without AGC)
- RF frequency: 47MHz~1000MHz
- RF output level: ≥65dBuV (@-12dBm@85MHz) (without AGC)
- RF output return loss: >10dB(without AGC)
- RF impedance: 75 Ω

● **Environmental Specifications**

- Operating temperature: 0 to 40° C
- Storage temperature: -40 to 85° C
- Operating humidity: 10% to 90%(Non-condensing)

● **Indicators**

- PWR/PON/LOS/GE/FE/CATV/WIFI/INT/OPT

● **Power**

- External 12VDC/1A power supply adapter
- Power consumption: <8.5W

● **Dimension and Weight**

- Item Dimension:
- 160mm(L) x 139.5mm(W) x 28.5mm (H)
- Item weight: 0.23kg

Software

● **Management**

- EPON :OAM / WEB / TR069 / Telnet
- GPON:OMCI / WEB / TR069 / Telnet

● **L3**

- IPv4/IPv6 Dual Stack
- NAT
- DHCP client/server
- PPPOE client/ Pass through
- Static and dynamic routing

● **Switch**

- MAC address learning
- MAC address learning account limit
- Port isolation
- Port flow control
- Broadcast storm suppression
- VLAN transparent/tag/translate/trunk

● **Multicast**

- IGMP V2
- IGMP VLAN
- IGMP transparent/Snooping/Proxy

● **Wireless**

- Choose channel automatically

● **Security**

- Firewall
- MAC address/URL filter
- Remote WEB/Telnet access control

● **Register**

- Auto-discovery/Link detection/Remote upgrade software
- Auto/MAC/SN/LOID+Password authentication



Application

- Typical Solution: FTTH
- Typical Business: Internet, CATV, Wi-Fi

