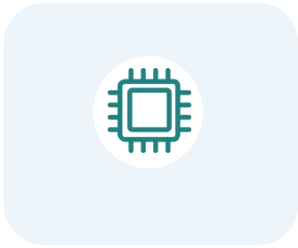




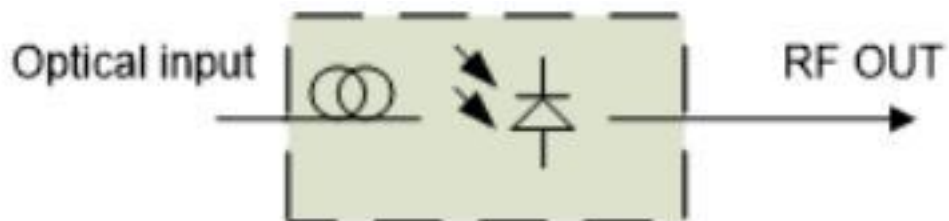
*Passive Optical Receiver With Filter*



## Brief Views

The passive optical receiver with filter is a FTTH optical receiver. The external optical input port and RF output port are easy accessible for operations.

## Block Diagram



## Features

- Needn't power supply
- Only for 1550 nm optical input

## Specification

Parameters	Unit	Value	Notes
<b>Environment Feature</b>			
Storage Temperature Range	℃	-40 ~ +85	
Operating Temperature Range	℃	-10 ~ +50	
Storage Relative Humidity		5%~95%	No Condensation
<b>Optical Feature</b>			
CATV Operation Wavelength	nm	1540~1563	Filter for CATV 1550nm
Responsibility	A/W	≥ 0.9	
Reflective Wavelength	nm	1310, 1490	Internet
Channel Isolation	dB	≥ 32	1550&1490nm
Optical Return Loss	dB	≥ 55	
Receiving Optical Power	dBm	-10~+2	
Recommended Receiving Optical Power	dBm	-7~+2	
Optical Connector Type		SC/APC	
<b>RF Feature</b>			
Impedance	Ω	75	
Work Bandwidth	MHz	47~1000	
Return Loss	dB	≥14	Within work bandwidth range 47~1000MHz
Flatness	dB	≤ ±2.5	
RF Output Level	dBuV	≥65±1	Input optical power is 0dBm for 59CH PAL_D analog TV signals, OMI=3.2%.
CNR	dB	≥51	At optical power 0dBm for 59CH PAL_D analog TV signals, OMI=3.2%.
C/CSO	dBc	≤-62	At optical power 0dBm for 59CH PAL_D analog TV signals, OMI=3.2%.
C/CTB	dBc	≤-65	At optical power 0dBm for 59CH PAL_D analog TV signals, OMI=3.2%.
RF Connector		F-Female	F-male optional
<b>Housing</b>			
Dimension L x W x H	mm	52 x 16 x 12	